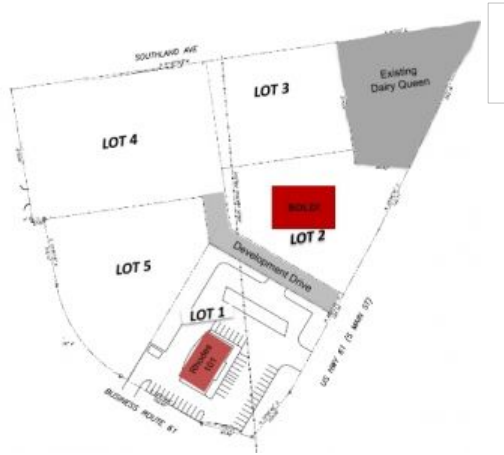




Southland Avenue, Sikeston, MO 63801

\$450,000

SemoMLS #: 12059 • Agency Listing #:



Built	Lot	0 Building	Empty Status
-------	-----	---------------	-----------------

Lorimont Commercial Real Estate

276 S. Mount Auburn Rd.
Cape Girardeau, MO 63703
(573) 334-5200 • Fax:
ccole@lorimont.com

Prime Commercial Lots Available in Sikeston Point Development

Located in a high traffic and visibility location is this prime development land suitable for retail, restaurant, or hotel sites. Tract sizes and configurations can be adjusted. Purchase, land lease or build to suit is possible.

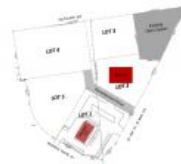
- Prime Development Land in Sikeston
- Excellent High Traffic Visibility Location
- Retail, Restaurant, or Hotel Sites
- All City Utilities & Services Available
- Tract Sizes/Configuration Can Be Adjusted
- Purchase/Land Lease/Build to Suit Possible
- Growing Area Between St. Louis and Memphis
- Prices Starting at \$450,000 and Up

ESqFt(Above): 184259
Zoning: Commercial
Status: Empty

Utilities: Public
Water: City
Waste: Sewer
Rural: No

Flood Zone: Undetermined
School: Sikeston
County: New Madrid
County Taxes: 3341

Type: Lot



Information deemed reliable but not guaranteed, all rights reserved by SemoMLS.com