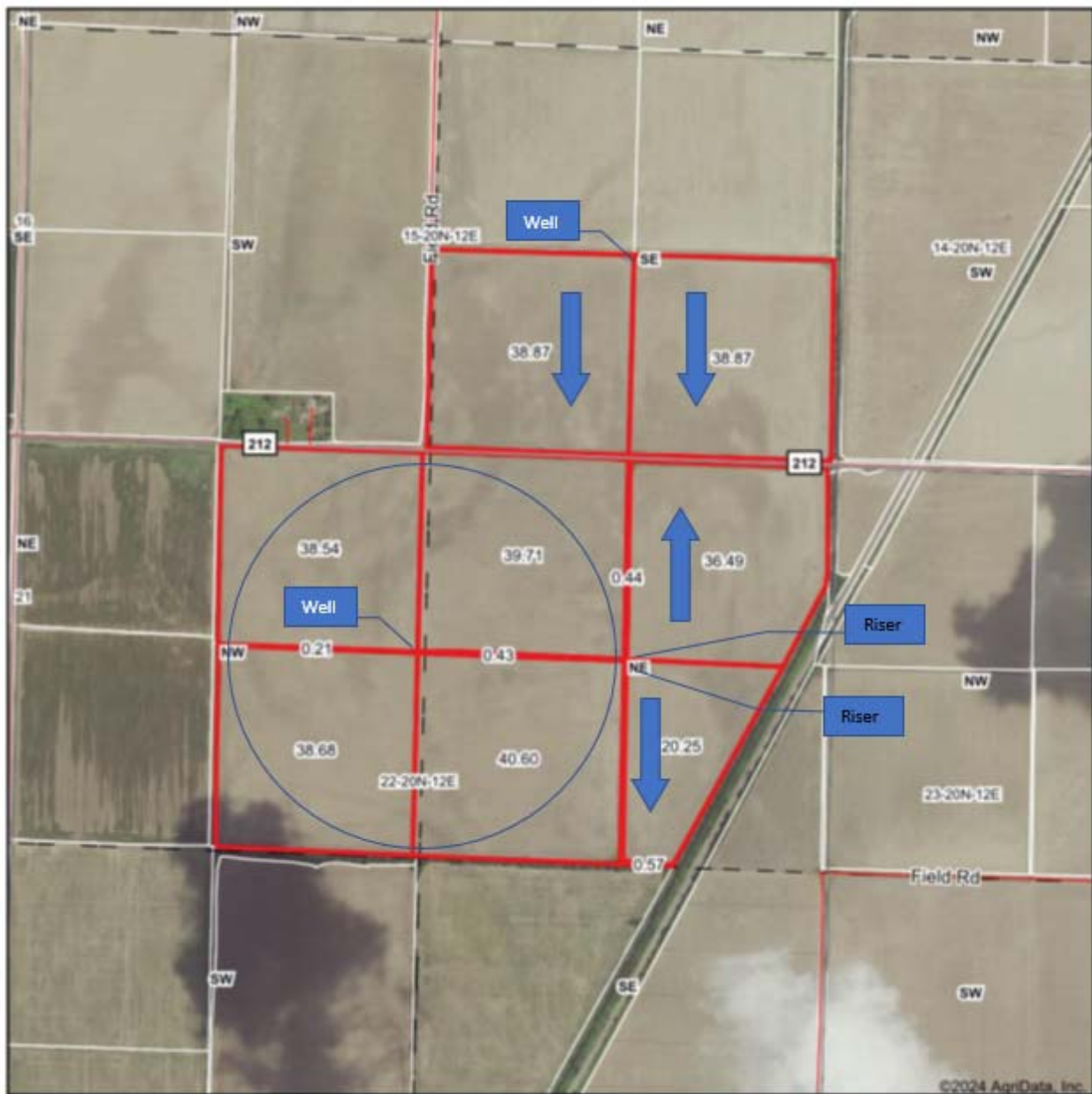


# Tract 1 Aerial Map



©2004 AgriData, Inc.

Boundary Center: 36° 21' 44.57, -89° 44' 39.58

0ft 1005ft 2009ft

**BOLLINGER**  
Real Estate Services

Maps Provided By:  
**surety**  
© AgriData, Inc. 2025 www.AgrData.com

**22-20N-12E**  
**Pemiscot County**  
**Missouri**

2/20/2024

Field lines provided by Farm Service Agency as of 5/31/2006

# Tract 1 Topo Map



Field borders provided by Farm Service Agency as of 5/21/2008

Source: USGS 10 meter dem

Interval(ft): 1.0

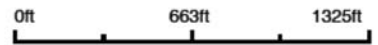
Min: 266.9

Max: 274.7

Range: 7.8

Average: 271.0

Standard Deviation: 0.62 ft

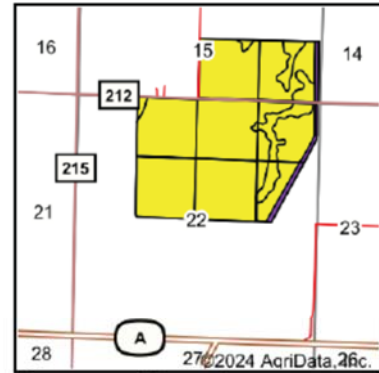
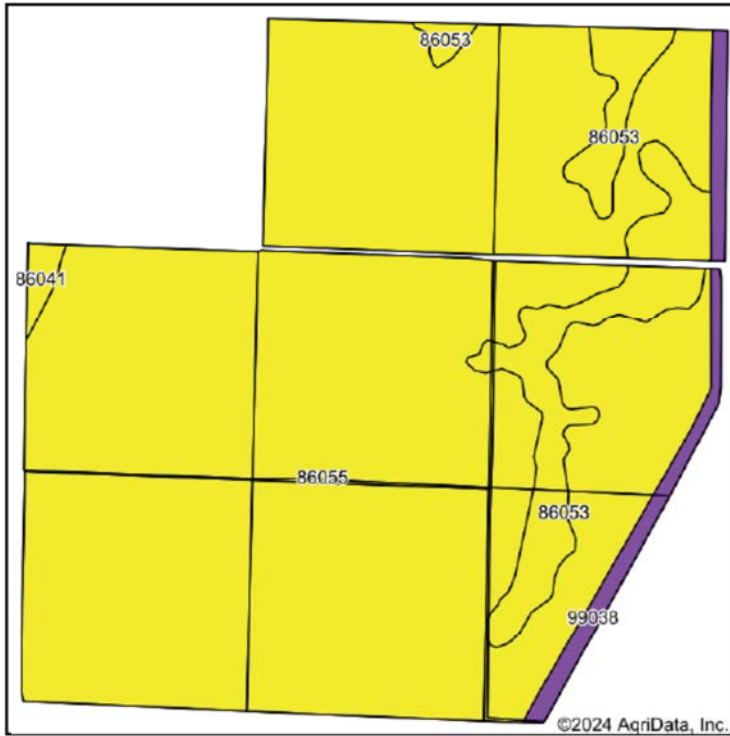


2/20/2024

**22-20N-12E**  
**Pemiscot County**  
**Missouri**

Boundary Center: 36° 21' 44.57, -89° 44' 39.58

# Tract 1 Soils Map



State: **Missouri**  
 County: **Pemiscot**  
 Location: **22-20N-12E**  
 Township: **Godair**  
 Acres: **203.06**  
 Date: **2/20/2024**



Soils data provided by USDA and NRCS.

Area Symbol: MO155, Soil Area Version: 26

| Code  | Soil Description   | Acres  | Percent of field | Non-Irr Class Legend | Non-Irr Class *c | Common bermudagrass AUM | Common bermudagrass Tons | Cotton lint Lbs | Improved bermudagrass AUM | Orchardgrass red clover hay Tons | Rice Irrigated Bu | Soybeans Bu |
|-------|--|--------|------------------|----------------------|------------------|-------------------------|--------------------------|-----------------|---------------------------|----------------------------------|-------------------|-------------|
| 86055 | Sharkey silty clay loam, 0 to 1 percent slopes, rarely flooded           | 258.53 | 88.0%            |                      | IVw              | 6.5                     | 8.1                      | 625             | 10                        | 7.1                              | 130               | 40          |
| 86053 | Sharkey fine sandy loam, overwash, 0 to 1 percent slopes, rarely flooded | 25.66  | 8.7%             |                      | IVw              |                         |                          |                 |                           |                                  |                   |             |
| 99038 | Levees-Borrow pits complex, 0 to 25 percent slopes                       | 7.90   | 2.7%             |                      | Vle              |                         |                          |                 |                           |                                  |                   |             |
| 86041 | Portageville clay, 0 to 1 percent slopes, rarely flooded                 | 1.57   | 0.5%             |                      | IVw              |                         |                          |                 |                           |                                  |                   |             |

Soils data provided by USDA and NRCS.



# Tract 2 Aerial Map



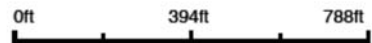
©2024 AgriData, Inc.



Field borders provided by Farm Service Agency as of 5/21/2008

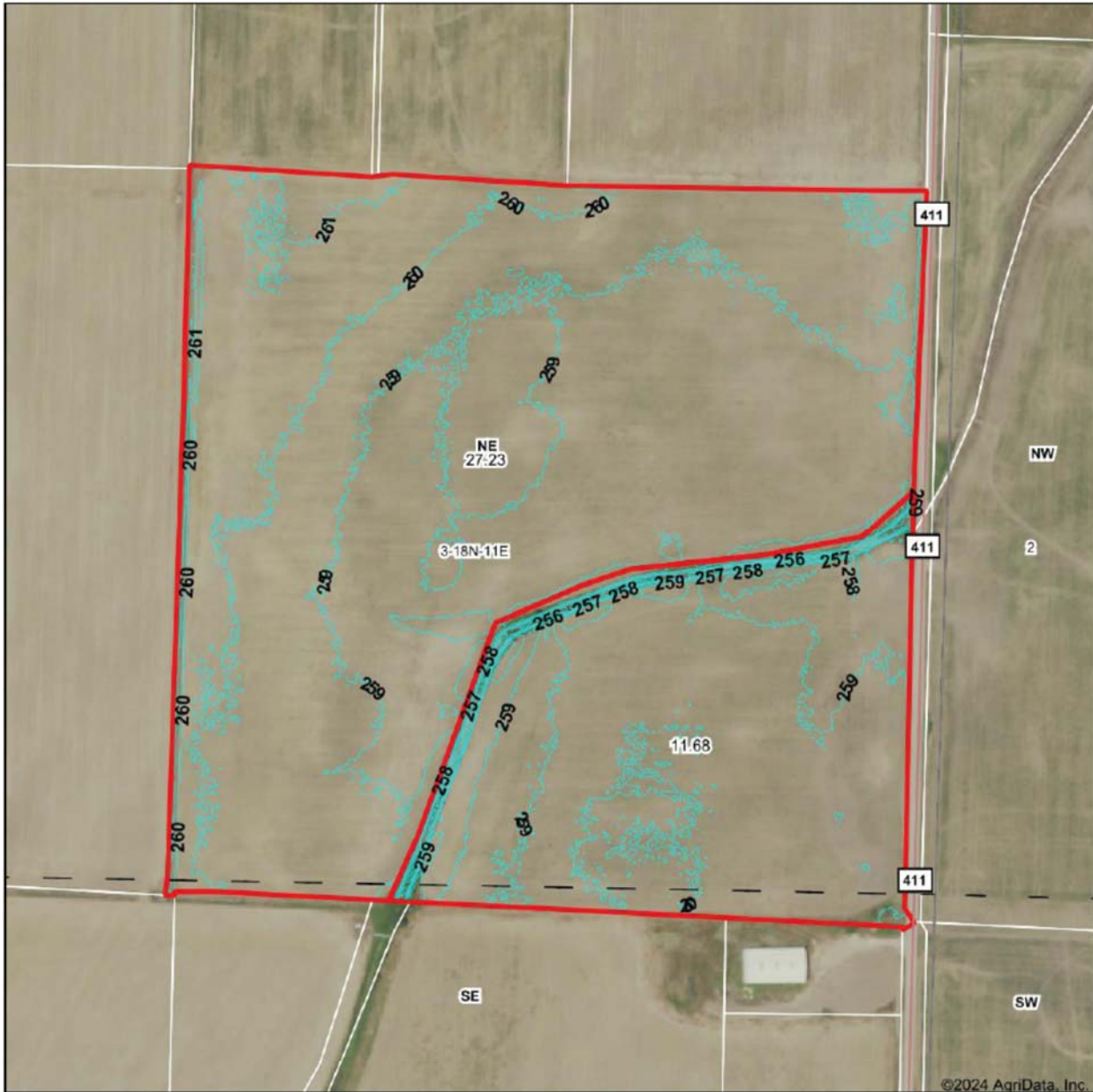
Boundary Center: 36° 13' 41.71, -89° 50' 43.5

**3-18N-11E**  
**Pemiscot County**  
**Missouri**



3/28/2024

# Tract 2 Topo Map



©2024 AgriData, Inc.



© AgriData, Inc. 2023 www.AgriDataInc.com

Field borders provided by Farm Service Agency as of 5/21/2008

Source: USGS 1 meter dem

Interval(ft): 1.0

Min: 253.8

Max: 262.0

Range: 8.2

Average: 259.3

Standard Deviation: 0.79 ft

0ft 277ft 554ft

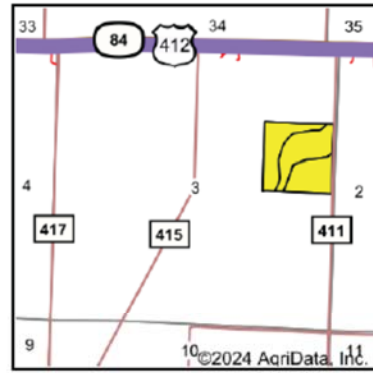
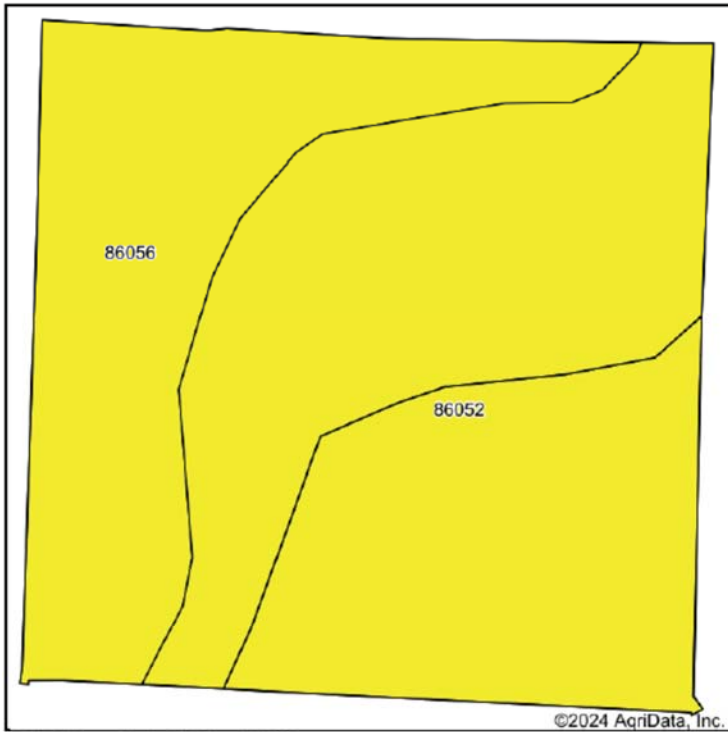


3/28/2024

**3-18N-11E**  
**Pemiscot County**  
**Missouri**

Boundary Center: 36° 13' 41.71, -89° 50' 43.5

# Tract 2 Soils Map



State: **Missouri**  
 County: **Pemiscot**  
 Location: **3-18N-11E**  
 Township: **Braggadocio**  
 Acres: **38.01**  
 Date: **3/28/2024**



Area Symbol: MO155, Soil Area Version: 26

| Code                    | Soil Description  | Acres | Percent of field | Non-Irr Class Legend | Non-Irr Class *c | Common bermudagrass Tons | Cotton lint Lbs | Cotton lint Irrigated Lbs | Orchardgrass red clover Tons | Rice Irrigated Bu | Tall fescue Tons | Warm season grasses Tons | *n NCCPI Soybeans |
|-------------------------|---|-------|------------------|----------------------|------------------|--------------------------|-----------------|---------------------------|------------------------------|-------------------|------------------|--------------------------|-------------------|
| 86052                   | Sharkey clay, 0 to 1 percent slopes, rarely flooded, north      | 26.08 | 67.0%            |                      | IVw              | 8.1                      | 480             | 720                       | 7.1                          | 145               | 8                | 9.2                      | 46                |
| 86056                   | Sharkey silty clay, 0 to 1 percent slopes, occasionally flooded | 12.83 | 33.0%            |                      | IVw              |                          |                 |                           |                              |                   |                  |                          | 46                |
| <b>Weighted Average</b> |   |       |                  |                      | <b>4.00</b>      | <b>5.4</b>               | <b>321.7</b>    | <b>482.6</b>              | <b>4.8</b>                   | <b>97.2</b>       | <b>5.4</b>       | <b>6.2</b>               | <b>*n 46</b>      |

\*n: The aggregation method is "Weighted Average using all components"  
 \*c: Using Capabilities Class Dominant Condition Aggregation Method

